

Woburn Clarke's Court Bay Marine Protected Area consultation with fishermen

“Building and breaking at the same time”



Photo: (From Left to Right: Jeremy Telesford, Shawnaly Pascal, Lawrence Gill, Emmanuel Braithwaite, Vanny Bell, Rodney Watson, and Alexander Antoine).

Crafton Isaac, Shawnaly Pascal and Zaidy Khan

February 2012

Table of Contents

Introduction	1
Specific Objectives	2
Method	2
Results.....	2
<i>a) Historical profile</i>	<i>3</i>
<i>b) Problem tree and SWOT Analysis.....</i>	<i>3</i>
<i>c) Awareness and learning.....</i>	<i>5</i>
Discussion: “Building and breaking at the same time”	6
Key learning.....	7
References.....	7
Appendices.....	8

Citation

Isaac, C., S. Pascal and Z. Khan. 2012. Woburn Clarke’s Court Bay Marine Protected Area Consultation with fishermen: “*building and breaking at the same time* “. Report for MPA Governance Project.

Disclaimer

This report was prepared as an activity under the MPA Governance Project implemented by the Centre for Resource Management and Environmental Studies (CERMES) under award NA11NOS4820012 from the NOS International Program Office (IPO), U.S. Department of Commerce. The statements, findings, conclusions, and recommendations are those of the author(s) and do not necessarily reflect the views of the NOS International Program Office (IPO) or the U.S. Department of Commerce.

Introduction

The Grenada Fisheries Division developed a marine protected area (MPA) programme in 1980, from an additional external funding source. The Division coordinated the designation of the Woburn/Clarke's Court Bay and Moliniere/Beausejour MPAs in 2001 (Gardner 2006). Grenada presently has three established MPAs – the Sandy Island/Oyster Bed Marine Protected Area (SIOBMPA) launched in July 2010, the Moliniere-Beausejour Marine Protected Area (MBMPA), launched in September 2010, and the Woburn/Clarke's Court Bay Marine Protected Area (WCCBMPA) to be launched in 2012. WCCBMPA serves as a demonstration site for the Fisheries Division MPA programme under the Caribbean Challenge Initiative. Grenada has committed to implement the Caribbean Challenge initiative to conserve 25% of near shore marine areas by 2020 in conjunction with regional agreements.

Whilst the established MPA sites are generally making progress, the sites share a need for improved communications with local stakeholders and the general public to build community support for MPA operations. Support for MPA regulations to ensure ownership and livelihood vision from protected areas to the local communities is necessary. Woburn Clarke's Court Bay (WCCB) local community has been known as a fishing community. It has been addressed in particular that the fishermen are not clearly aware of the WCCBMPA protection and management plans that are currently being proposed and initiated by the government.

Independent consultants are currently contributing to the development of the new Woburn/Clarke's Court Bay management plan and zoning plans. While the MPA management plan is being drafted, it has been identified that MPA consultation and raising awareness is critical during the process with fisher folks. MPA stakeholders have been identified and the WCCBMPA stakeholder committee has been setup. It has been observed that stakeholders, such as developers in the areas, marinas and yachting communities are prominent and easily identifiable, while the fishermen who are not organized, as a group are not actively participating.

Since the fisher folks in the WCCB at this stage do not have an organised body, it can be challenging to include them in protected area planning, management and enforcement processes. The MPA enforcement regulations will have direct impacts on the fishermen's livelihoods and lack of consultation will lead to ongoing MPA compliance and community ownership issues. Therefore fishermen who are the primary stakeholders have to be made aware of the MPA zoning, management and enforcement processes. Their active participation through an organized group is critical during these processes.

Fisheries have conducted a survey in the area to determine the number of fishermen in the community, their fishing grounds, and their interests in WCCB. This activity attempts to create awareness on the importance of MPAs within the context of ecosystem based management and adaptive capacity.

Specific Objectives

- Identify fishermen as one of the primary stakeholder groups for the MPA management initiative.
- Inform the fishermen on the WCCBMPA proposed management development and discuss fishers' perception on the MPA using a SWOT analysis.
- Create awareness with fishermen on the importance of MPAs and share the experiences of how fishermen have organized themselves to represent themselves at the national level with respect to the fisheries management decision-making process.
- Discuss survey results on the number of fishermen using the WCCBMPA as their fishing grounds.

See also Appendix 1

Method

The activity was conducted in the form of a group meeting with ten fishermen. The first meeting was held at Island View Seafood restaurant in Woburn community on 31st January at 5.30 pm. The island View Seafood restaurant is close to the Woburn fishing jetty and is a common fishermen hang out spot in the afternoon. Jeremy Telesford and Shownaly Pascal from WCCBMPA stakeholder committee facilitated all logistical arrangement for the group meetings. A second fishermen consultation meeting was held at Baaba's bar in Woburn community on 18th February at 5.30pm.

Time was spent in planning the process with the project team, fisheries officer and MPA coordinator. Emphasis was placed on the facilitation process ensuring participatory approaches and tools were used to enable the fisher folks to share, enhance and analyse their knowledge of their resources in order to contribute effectively to the consultation. Facilitation tools such as situation analysis, a problem tree, and SWOT analysis were used for consultation. For MPA information sharing and raising awareness, communication and media tools, such as power point slides, video clips and posters were also used.

The facilitator asked questions directed to the fisher folks and they were encouraged to respond in any formal or informal manner that they chose, and to raise any issues concerning them in relation to the MPA. All findings were qualitative in nature; no quantitative data or statistical sampling was utilized.

Results

Most of the fisher folks present in the meeting were older fishermen who use the bay for traditional and subsistence fishing. Findings from the situation analysis are shown below and reflect the fisher folks' perceptions relating the WCCBMPA. The analysis provided discussion about the local environment, marine resource uses and problems in the bay.

a) Historical profile

Since the designation of the WCCBMPA occurred 10 years ago, the fishermen highlighted the changes that have taken place with the bay over this period. In 2011, the Fisheries Division managed to coordinate the realization of the MPA from a paper park to an effectively managed MPA with an on-site base management planning process.

Table 1: Historical profile.

Changes	Past (10 years ago, 2002)	(Current) 2012
Local Population	Mainly farmers and fishermen.	Has increased. Fewer farmers. Fishing is still essential.
Number of local houses	-----	Most of the houses have not increased.
Number of marinas	Only 1	Increased extensively, 6 operational Marinas in the WCCB.
Number of real estate developments for private homes	1 or 2	Increased extensively.
Number of yachts in the bay	Only a few yachts anchored mostly in front of Hog Island.	More than 100 yachts in one bay. Have increased extensively and yacht anchorage is now in all bay.
Marine Protected Area	Government designated the MPA for nursery grounds. (Protection of natural ecosystems and resources).	Government planning launched for WCCBMPA in 2012. (MPA with multiple uses).
Resource use by the local communities and the fisher folks	Bay was used for commercial and subsistence fishing. Bay was used for swimming and sailing regattas.	Fishing in the bay is mainly for subsistence use. Cannot use the bay for swimming.

b) Problem tree and SWOT Analysis

Major problems identified by the fisher folks in relation to the MPA that are directly affecting them are:

- The discharge of sewage pollution and improper waste disposal into the bay from yachts.
- Fishers perceived the MPA would be restricting access to traditional fishing areas to allow the tourism, foreign development and yachting industry to move in. This will affect their livelihoods.

Causes of the problems:

- Increase in the number of yachts in the Bay.
- Lack of enforcement for proper waste management
- Not enough awareness concerning the effects and consequences of sewage pollution in water
- Fishers believed they were not consulted and involved in the decision making of the designation of WCCMPA due to lack of consultation, awareness, and MPA communication.

Effects of the problems:

- Local communities cannot use the bay for swimming. Furthermore, the communities cannot use the bay in the traditional manner they used in the past. High sanitation and hygienic issues are present in the bay.
- Sewage release is a direct threat to human and environment health.

Following the problem tree, a SWOT analysis was conducted to list the strengths, weaknesses, opportunities and threats perceived by the fishermen in relation to the operation of the WCCBMPA.

Table 2: SWOT analysis.

STRENGTHS	WEAKNESSES
<p>1.) Management would allow them to address major threats within the basin: waste management and pollution issues from yachts, effluent from the sugar factory and elsewhere.</p> <p>2.) Management would provide protection of the marine resources and ecosystem services of the bay and assist in zoning the bay for various user interests.</p> <p>3.) Management stakeholder consultation will provide avenues for fishers to address their livelihood concerns in relation to the MPA.</p> <p>4.) The WCCB is not a commercial fishing site & has limited livelihood impacts on fishers at the commercial level.</p>	<p>1.) Fishers who fish outside the area may not show particular interest.</p> <p>2.) Proposed management does not seem to offer a solution to the problem of developments such as marinas and resorts (Fisher: <i>“Building and breaking at the same time”</i>)</p> <p>3.) Fishers are concerned that the WCCBMPA regulations will prohibit their traditional and subsistence fishing. They have this concern due to the observed regulations placed on MBMPA and SIOBMPA.</p> <p>4.) Fishers worry that their views will not have as much weight compared to “big” companies and yachts.</p>
OPPORTUNITIES	THREATS
<p>1.) Management may provide the opportunity for fishers to become organized and engaged, and to bring collective concerns to the MPA management committee.</p> <p>2.) May offer solutions to deal with the yacht and mariner “problems”.</p> <p>3.) May provide an opportunity to extend the boundaries of the MPA eastward to pre-empt further degradations in adjacent mangrove communities.</p>	<p>1.) Depending on the type of management regulations established in the future, these may lead to the loss of traditional user access to the fishing grounds within the basin.</p> <p>2.) Fishers voices may be not influential in the decision-making process in comparison with stakeholders with greater power and money.</p> <p>3.) If other fishers show little or no interest in management than fishers’ positions could be weakened (undermined). It has been challenging to organise the fisher folk in Woburn to date.</p>

c) Awareness and learning

Fisher Participation: How fishers can be involved in the MPA management process.

Fishers were asked whether they think now is an important time for them to get organized to voice collective issues in relation to MPA management planning while it is still in the planning phase.

During this discussion resource personnel shared the video called The Fishers Journey, which showed an example from Belize where fishers have been able to organize themselves collectively and work closely with an MPA management team in the MPA management process.

It has been agreed by the fisher, that they need to organize themselves. Fishers have to contact other members to come to upcoming meetings.

Fishers requested information on

1. The different types of MPAs
2. Under which criteria the WCCBMPA was designated as an MPA area
3. Types of MPA management regimes

A second follow up consultation was held, to continue the consultation process and raise awareness on the importance of information sharing with respect to ecosystem based approaches to resource management and general information on what are MPAs. A power point slide presentation on Ecosystem Based Management and MPAs was shared with the fishermen. (Appendix 2)

Discussion: “Building and breaking at the same time”

Fishers do not see WCCBMPA as an added value to the commercial fishing in relation to their short-term livelihood but do realize through the management process they may be able to voice local concerns in multi stakeholder meetings. Fishers see the need to organize themselves. They agree that WCCBMPA management planning may be a very complex process and that it will be challenging to obtain buy-in from various stakeholders.

Specific questions were raised during fishermen consultations with regard to the construction of marinas within the MPA. The opinion was strongly expressed by one fisher that the two entities (on going development and marine protection) were incompatible and the proposers for the MPA simultaneously should note the cause “building” and “breaking” at the same time.

The facilitator, Mr Isaac, promised to provide a response next time. He found that most of the marina development did not have an approved environmental impact assessment from the Fisheries Division. This indicates that the concern raised by the fishermen is legitimate and begs the question as to what exactly are government’s development plans for the area. Whatever might be said about the environmental impact (or lack thereof) of these developments, it is public perception that is important here. If the stakeholders on the ground feel that they have been asked to restrict from activities (present & future) in the

interest of the ecosystem, but perceive that “big investors” are the first and direct beneficiaries, convincing them otherwise could prove to be an insurmountable hurdle.

Pollution issues have been on-going in the area and need to be addressed for the people in the community to see the importance of protecting the bay’s resources.

Fishers are willing to continue to participate but face the challenge of organising themselves. They feel that they will be able to work through their community slowly, but more public awareness through media will be helpful.

Key learning

- More public consultation is needed to raise awareness on the WCCBMPA management planning and approaches.
- A clear vision is needed to see how the on going marina and private home developments will be incorporated in the WCCBMPA management planning.
- More information is needed as to how the MPA management plan is going to deal with pollution problems.
- More consultation and active engagement at community level is needed to discuss MPA livelihoods issues.

References

Gardner, Lloyd. 2006. Review of the Policy, Legal, and Institutional Frameworks for Protected Area Management in Grenada. Environment and Sustainable Development Unit, Organization of Eastern Caribbean States.

A Fisher’s Journey. 2010. Daring or Nothing Productions llc. Retrieved from GCFI Fisheries for Fishers Initiative, GCFI [Online], www.gcfi.org/index.php.

Appendices

Appendix 1 Activity follow-up form

Adaptive capacity for MPA governance in the eastern Caribbean: Follow-up Activity Form

Please complete all sections and submit as an email attachment to patrick.mcconney@cavehill.uwi.edu

1. Contact information

Workshop #	Theme of activity
Title of activity	MPA Consultation with Fishermen
Organisation	Woburn Woodlands Development Organization (W.C.C.B.M.P.A)
Town/location	St.George's
Area/parish	Woburn/C.C.B.M.P.A.
Country	GRENADA W.I
Activity leader	Jeremy Telesford
Title of post held	Warden
Telephone(s)	1(473)536-3201 1(473)534-1736
Facsimile(s)	
Email address(es)	Jere-t1@hotmail.com
Skype name(s)	Jerryboat28

We will use e-mail for most communication so give addresses that are reliable and are checked regularly. Type responses in the boxes below and they will expand to fit the text. Try to be concise but very clear.

2. What is the purpose/objective of your activity related to adaptive capacity for MPA governance? (<100 words)

- To inform the fishermen on the WCCBMPA zoning and proposed management and MPA enforcement plan starting this year.
- To consultate the fishermen and identify them as one of the primary stakeholder group for the MPA management initiative.
- To report back survey results on the number of fishermen using the WCCBMPA and create dialogue and discussion of how fishermen may be affected from the MPA enforcement plan.

4. What specific (measurable, verifiable) outputs will you achieve by the end of the activity? (3-5 bullet points)

- Information sharing on the national MPA plan in the WCCBMPA.
- MPA –fisher stakeholder consultation and confirming the number of fishers in the area
- Develop understanding on MPAs
- List of threats and issues of fisher folks in regards to the enforcement of WCCBMPA.

--

5. What is your scheduled work plan and budget for the 1-4 week activity? (Insert or delete rows as necessary)

Task description (major tasks to be accomplished for deliverables)				Wk1	Wk2	Wk3	Wk4	Cost (USD)
Gathering the fisher list nub and contacting them. Communication				X				20
Setting venue for meeting / confirm dates: (Venue / snacks/ set up)					X			100
Conduct the short awareness meeting.						X		
Data collection and reporting and future follow-ups.							X	
Travel cost								100
Start date	Jan/ 9/ 2012	End date	Feb 12/2012	Total budget for activity =				\$220

6. In the table below list the critical resources or stakeholders in the activity and their roles. (Insert or delete rows)

Critical resource or stakeholder identified	Role in implementing the activity or specific tasks
W.W.D.O.	
Fishermen	Feedback on fishery stock and marine diversity and governance issues relating the effectiveness of MPA
CERMES /	Technical resource personnel (facilitator)
MPA national chair	Technical (facilitator)
Fishers MPA coordinator	Facilitator

7. Are there any assumptions or circumstances that may impact on successful implementation? (<100 words)

<ul style="list-style-type: none"> Fishermen volunteer participation in the meeting.

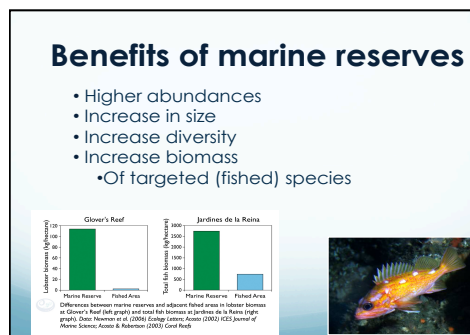
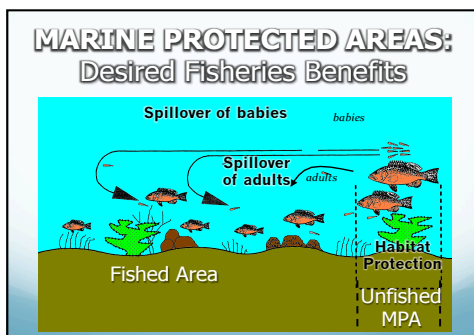
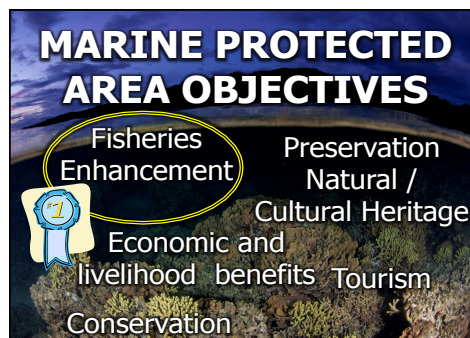
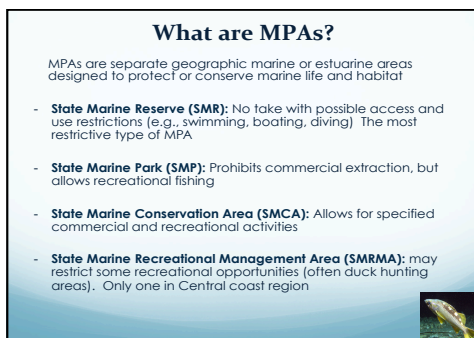
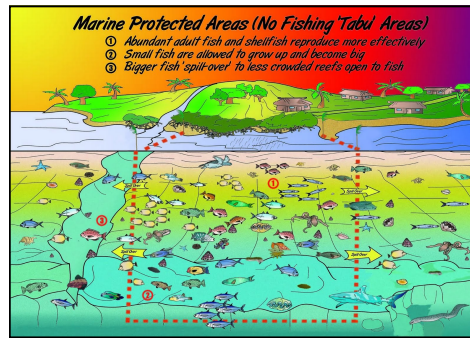
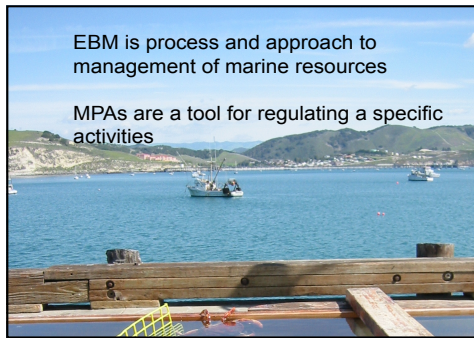
8. If you are not authorised to sign follow-up agreements on behalf of your organisation, identify the person who is

Authorised person	MR, Roland Baldeo
Title of post held	MPA coordinator

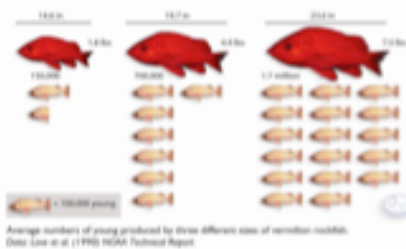
9. Any other pertinent information (<100 words)

<p>The fishermen in the area has very little knowledge of the changes within the MPA and is a bit reluctant to part take in any activity mainly because the do not want it to be another political issue.</p>

Appendix 2 Ecosystem Based Management and MPAs



Importance of protecting larger, older fish



Species Movements and MPAs



Connectivity

Many marine organisms live in different places throughout their life cycle



Video Show

- Fishers Journey.
- Massa God Fish can be done.