

Entry Requirements

Degreed Applicants: Applicants under this category should have:

- A bachelor's degree from an approved educational institution; and
- At least one (1) year's experience in a managerial position in a cricketing environment or two (2) years' experience in other sports environments.

Non-Degreed Applicants: Persons who do not hold a first degree should possess:

- An associate degree or diploma from an approved educational institution; AND
- At least three (3) years' experience in a managerial position in a cricketing institution or three (3) years experience in other sports institutions.

In general, applicants for the programme may have to undergo an interview before final selection.

Programme Cost

BDS\$20,000

A deposit of BDS\$2,000 (US \$1000) is payable on receipt of confirmation of acceptance into the programme and the remaining fees are payable in four equal installments by the first day of January, April, July, October and September.

University Registration Fees

University Registration Fees are NOT included in the cost of the tuition fee.

These fees are as follows:

- Amenities Fees – BDS\$700.00 (US \$350.00)
- Guild Fees – BDS\$120.00 (US \$60.00)
- ID Card – BDS\$25.00 (US \$12.50)



CONTACT INFORMATION FOR M.Sc. CRICKET STUDIES

Programme Coordinator

Akhentoolove Corbin

Email: gradinfo@cavehill.uwi.edu

Tel: (246) 417-4299 / Fax: (246) 438-9167

TAUGHT HIGHER DEGREE PROGRAMMES

FACULTY OF HUMANITIES & EDUCATION

- MA Cultural Studies
- MA Heritage Studies
- MA History
- MA Linguistics
- MA Post-Colonial Literatures In English
- Masters of Education
- MA Spanish Language & Literature
- MA French Language and African & Caribbean Literatures in French

FACULTY OF LAW

- LLM and Graduate Diploma in Corporate and Commercial Law
- Legislative Drafting
- Public Law

FACULTY OF MEDICAL SCIENCES

- Master of Public Health
- Master of Public Health in Health Services Management
- Graduate Diploma in Health Services Management

FACULTY OF PURE & APPLIED SCIENCES

- MSc Electronic Commerce
- MSc Natural Resource and Environmental Management

FACULTY OF SOCIAL SCIENCES

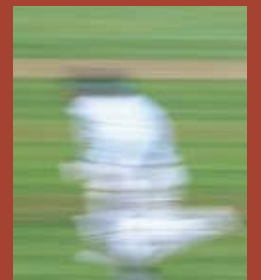
- Master of Social Work
- MSc Applied Psychology
- MSc Banking & Finance
- MSc Counselling Psychology
- MSc Cricket Studies
- MSc E-Governance for Developing States
- MSc Financial and Business Economics
- MSc Integration Studies
- MSc International Management
- MSc International Trade Policy
- MSc Labour & Employment Relations
- MSc Project Management & Evaluation
- MSc Tourism & Hospitality Management

UWI also offers a range of MPhil and PhD programmes in a number of areas. Information on these as well as our application process, online application forms, and the documentation required can be found at:

www.cavehill.uwi.edu/gradstudies



The University of the West Indies
Cave Hill Campus



Masters Programme
Faculty of Social Sciences

M.Sc Cricket Studies
CLR James Centre for Cricket Research



2009-2010



Course of Study

The programme will be delivered full-time over a twelve (12) month period. Participants may choose to complete the programme over a two (2) year period part time. The degree is structured with eight (8) courses, a research project and a practicum for a total of thirty-nine (39) credits. Each course is designed in modular format and its flexibility allows the programme to be offered online.

Core Courses

- **Political and Social History of WI Cricket**
- **Cricket and WI Nationalism**
- **Research Methods**
- **Contemporary Management and Financial Issues in WI Cricket I**
- **Leadership and Human Resource Management**
- **Cricketers' Texts and Testimonies**
- **Contemporary Management and Financial Issues in WI Cricket II**
- **Sports Psychology**

Research Paper

Research Paper: Students will be assigned to a supervisor who will provide advice and guidance in the preparation and completion of the paper. Work on the research paper will begin in Semester II. The research project must be no less than 12,000 words.

Practicum: The practicum will be for 3 months. It will involve an attachment to cricketing institutions within and outside of Barbados. Students will be required to submit a paper documenting their experience and relating it to material covered throughout the core programme. The report must be underpinned by sound theoretical and conceptual ideas taught throughout the course and must therefore demonstrate strong and relevant links between theory and practice.

Programme Faculty

Facilitators will be drawn from the academic staff at the Cave Hill Campus and adjunct faculty, including high quality regional and international experts in specific disciplines.

Course Details

The following samples of course synopses give a general description of the material to be covered. For a full listing of programme synopses please visit www.cavehill.uwi.edu/gradadmissions

CKST6000: Political and Social History of West Indies Cricket

This course is designed to help students understand the critical moments and scenes in West Indies cricket history during the colonial period. It will address such issues as race, ethnicity and class, identifying the social circumstance surrounding the growth and development into a team of world-class players with a distinct identity. It identifies the uniqueness of the Caribbean social experience and the various factors that contribute to this unique institution called West Indies cricket. Issues related to comparative cricket histories will be highlighted in the programme.

CKST6030: Contemporary Management and Financial Issues in West Indies Cricket I

This course is designed to help students understand the role of sport and cricket in particular in contemporary society, with a special emphasis on marketing and sponsorship, corporate social responsibility and sports medicine including issues related to drug use. It seeks to highlight the major challenges that sportsmen/sports women, managers and administrators are experiencing in contemporary sports, but will also address the many positive benefits of sports as a viable alternative in human development and business. Particular emphasis will be on the role, functions and challenges of Small Island Developing States (SIDS) in the international sports field, and its link to sustainable development.

CKST6070: Sports Psychology

The course involves the study of human behavior in sport and exercise settings. The course will enable students to explore the effect of the interaction between individual differences and socio-environmental factors on the Caribbean sportsperson. Students will be guided in the application of psychological theory to the examination of exercise and sport performance. It is designed to provide the students with the information about research in the field of sport psychology as well as practical knowledge to become a more effective fitness instructor, sport manager/administrator, physical educator or coach. It will examine theories of individual personality and explore the social phenomenon associated with sport participation.

CKST6040: Leadership and Human Resource Management

This course will introduce participants to best practices in leadership in sports. It will look at the relationship between leadership, management, motivation, repeatable good performance and winning in sports. Participants will be introduced to transformational leadership, shared leadership and multidimensional leadership concepts. There will be particular focus on the relationship between leadership and human resource management, and how this facilitates the people functions of training, career development, career planning, creativity, industrial relations, performance planning and assessment. It will

use case studies to identify examples of best practices in sports leadership and human resource management, particularly in sporting environments within and outside the Caribbean. Finally, participants' psychological type and leadership style preference will be assessed and discussed in the (HR) managerial context.

Faculty/Facilitators

Professor Hilary Beckles : Professor Hilary Beckles - Principal and Pro-Vice Chancellor, Cave Hill Campus, UWI. He has published extensively in the history and sociology of West Indies cricket.

Dr. Aviston Downes : Lecturer in History, Department of Humanities, Cave Hill Campus. He has published several works on the history of West Indies cricket and teaches an undergraduate course in the history of West Indies cricket.

Akhentoolove Corbin : Lecturer/Coordinator MSc. Cricket Studies. He is currently reading for his PhD at the UWI, Cave Hill Campus and his research thesis is on Shared Leadership and performance in sports, with special emphasis on West Indies Cricket.

Dr. Justin Robinson : Head of Department, Management Studies, Cave Hill Campus and specialist in corporate finance.

Jeff Cumberbatch : Lecturer in the Faculty of Law, Cave Hill Campus and has special research interests in sport and the law, media law and employment law.

June Caddle: Lecturer in Sport Management, Barbados Community College and Part-Time Lecture, Cave Hill Campus, UWI. Her research interest is in the psychology of sport.

Dion Greenidge : Teaching Assistant in the Department of Management Studies, Cave Hill Campus, with research interest are the structure and measurement of personality and other individual difference variables.

Wayne Charles-Soverall : Lecturer in Department of Management Studies, Cave Hill Campus, and has research interests in public management, organizational behaviour, corporate social responsibility and human development.

Adrian Lorde : Private medical practitioner with special interest in sport medicine and anti-doping strategies in sport.

Neil Murrell : Coordinator of Caribbean Anti-doping Agency with special interest in doping and performance in sport.

Graham Clarke : Executive Director of Canadian General Accountants (CGA), Barbados. He has special interests in relationship marketing and marketing and public relations in sport.

Calvin Hope : Former Director of Marketing with the Barbados Tourism Authority (BTA) with special interests in sport tourism, sports marketing and events management.